

ANNUAL REPORT 2018



**Ronald McDonald
House Charities®**
San Antonio

Keeping families close™

EXECUTIVE DIRECTOR'S THOUGHTS

pat bivin



Cultivating relationships

Much like a garden, cultivating relationships with the community, the donors, our volunteers, employees and the families we serve is a vital and necessary element of sustainable growth. We've probably all had the experience of throwing seeds into the ground, watering them and waiting for them to sprout through the soil only to be left disappointed. Gardening takes time, and cultivation... turning the soil to let the air and water in; breaking up the surface to bring weeds to the top and allow the seedling to find space for its roots. Cultivating the soil in your garden is a must.

Nonprofit relationships are the same.

Ronald McDonald House Charities of San Antonio is a well-established nonprofit that has been serving the community of families in South Texas and beyond for over three decades. I've personally been pleased to lead our efforts for 35 years. We started with a ten room House on Lewis Street and with amazing nurturing community support we now have 77 welcoming rooms available every night in four locations in San Antonio *Keeping Families Close.®* In preparation for 2018, we understood that with tremendous goals for growth (the building of our 4th house in San Antonio) comes the responsibility to cultivate old relationships with existing donors, expand our outreach to attract new donors and volunteers, support our employees and embrace new roles and new team members to meet our growing needs.

2018 brought a new donor to Ronald McDonald House SA. AbbVie Inc. became our largest donor in history, providing us with a contribution of 4.3 million dollars for the completion of our latest 21-bedroom house with a 5-suite transplant wing. This expansion allows us to provide an additional 7,665 nights of accommodations to families annually who come to us in crisis; desperate to remain close by their ill or injured child while they undergo life-saving treatment. But as we all know, one new donor doesn't build a house of this magnitude. It is the collective of many individual donors and community support that make such an accomplishment attainable. And it requires dedicated volunteers and employees to make it a success for our family guests.

This year, and for the years to come, our focus will remain on cultivating relationships. We will focus on continued identification of individuals, corporations, philanthropic entities and team members who share our values, support our goals and plans and we will ask them to join us in improving the lives of families in crisis throughout our community and the world.

Will you join us? Go to www.rmhcсанantonio.org to see for yourself all the ways to give... of your time, of your talent or of your treasure. We promise to cultivate and nurture our relationship.

Welcome to our Garden.





PRESIDENT'S PERSPECTIVE

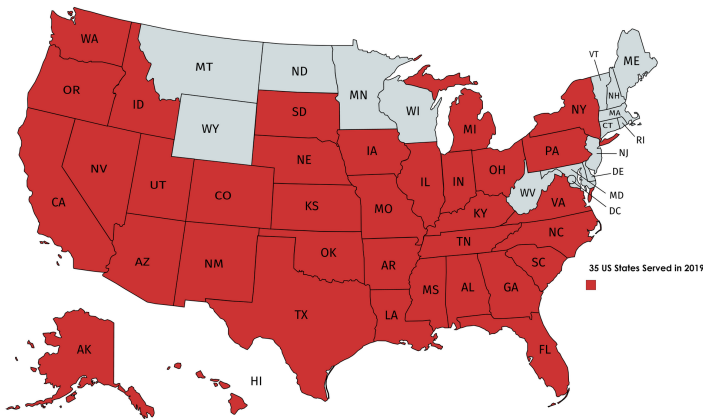
carlos rodriguez

It's all about families.

Today, there is a general consensus on the importance of family involvement in high quality care for hospitalized children, but this was not always the case. The change our program has brought about is systemic. Ronald McDonald House has been at the forefront of the family-centered care movement since before the movement was given a name. We are committed to working collaboratively **for and with families** and with local children's health care partners so that children have **access to the best possible medical outcomes**. Over the years, a growing body of research has provided strong evidence that demonstrates the value of our mission... highlighting the physical, emotional and social needs of families with a hospitalized child and confirms the importance of *proximity, involvement, and partnership with families* whose child is hospitalized or undergoing critical medical treatment. The accommodation and support services RMHCSA provides to families of hospitalized children are not only beneficial; they are essential to high-quality and effective health care. Thank you for your sustaining support in **improved medical outcomes for children**.



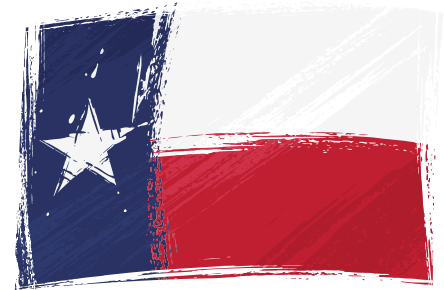
WHO WE SERVE



35 US STATES SERVED IN 2018

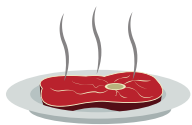
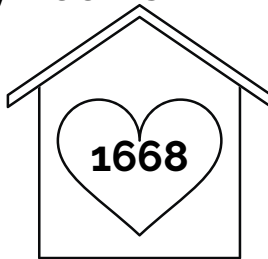
Families come from all over the US to receive top-rated medical care at our local hospitals. In addition, RMHCSA welcomed children and their families from Mexico, Spain, Ecuador, Honduras, Venezuela, Dominican Republic and Puerto Rico.

79



Texas Counties represented

People Served in
Laredo
Family Rooms



19,530
meals and
snacks

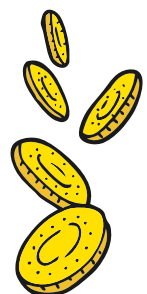


SERVED WITH LOVE

\$12,000 in vouchers
distributed to families



Number of families
served in 2018
2080



\$80.00 vs \$2.21
Daily average cost
of providing for a
family vs. average
daily donation.

Meet our Families

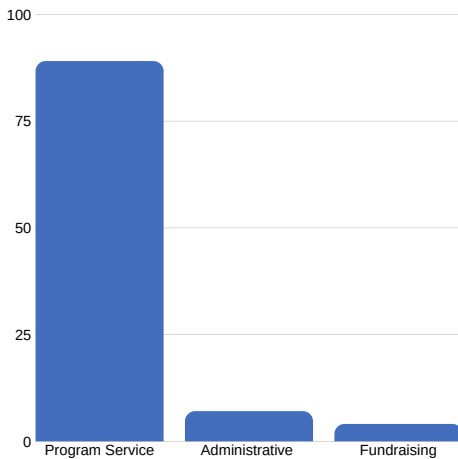


Our Mission is to provide a home, not just a room, to critically ill children and their families who must travel outside of their own community to seek medical treatment.

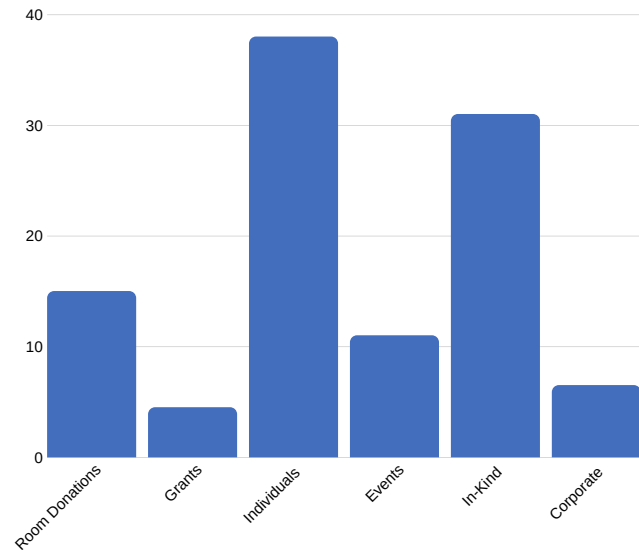


Financials

2018 Expenses



2018 Revenue & Support



Why we Volunteer



"We volunteer to take the burden off of families and give them one less thing to be stressed about." A group from **Airforce Medical Readiness Flight** is preparing a meal for families living at our Sid Katz House. The home-like aroma wafts through the house and serves as a welcome to all. "Everyone needs to know that they are supported, especially during a crisis with their child. We're giving back."

Why I give



She **covers children with blankets and prayers.** Patricia Henson makes and donates blankets. When her church sewing group ended, she found she missed making the blankets they had once lovingly sewed. So with the encouragement of her husband, she began sewing blankets while sitting at her sewing machine by the window in her home. As she sews and watches people walk by, she prays for the child, unknown to her, who will cling to this blanket one day while undergoing medical treatments. A retired veteran teacher of 29 years in Corpus Christi, Patricia is giving back and making a difference in the lives of the families we lovingly serve. Thank you for your service Patricia .

Financials

RONALD MCDONALD HOUSE CHARITIES OF SAN ANTONIO, TEXAS, INC.
STATEMENTS OF ACTIVITIES
FOR THE YEARS ENDED DECEMBER 31, 2018 AND 2017

	2018			2017		
	WITHOUT DONOR RESTRICTIONS	WITH DONOR RESTRICTIONS	TOTALS	WITHOUT DONOR RESTRICTIONS	WITH DONOR RESTRICTIONS	TOTALS
REVENUE AND SUPPORT						
Room Donations, Net of Refunds of \$60 and \$260	\$ 202,304	\$ -	\$ 202,304	\$ 174,526	\$ -	\$ 174,526
Contributions	595,425	-	595,425	1,013,465	-	1,013,465
Grant Revenue	63,750	-	63,750	286,500	-	286,500
Capital Campaign Revenues	4,903,717	-	4,903,717	-	378,627	378,627
Memorials and Tributes	10,123	-	10,123	12,127	-	12,127
Special Events, Net of Direct Expenses, of \$63,324 and \$61,764	148,055	-	148,055	202,420	-	202,420
Investment and Interest Income (Loss), Net Expenses of \$23,370 and \$23,858	(90,683)	-	(90,683)	190,251	-	190,251
Miscellaneous Revenue	1,040	-	1,040	19,220	-	19,220
In-Kind Contributions	430,117	-	430,117	436,772	-	436,772
Net Assets Released from Restrictions	1,006,976	(1,006,976)	-	25,109	(25,109)	-
TOTAL REVENUE AND SUPPORT	7,270,824	(1,006,976)	6,263,848	2,360,390	353,518	\$ 2,713,908
EXPENSES						
Program Service	1,913,235	-	1,913,235	1,957,730	-	1,957,730
Supporting Services:						
Administrative	155,098	-	155,098	66,251	-	66,251
Fundraising	84,032	-	84,032	53,473	-	53,473
Unallocated payments to RMHC, Inc.	-	-	-	37,558	-	37,558
TOTAL EXPENSES	2,152,365	-	2,152,365	2,115,012	-	2,115,012
CHANGE IN NET ASSETS	5,118,459	(1,006,976)	4,111,483	245,378	353,518	598,896
NET ASSETS						
BEGINNING OF YEAR	5,986,990	1,608,139	7,595,129	5,741,612	1,254,621	6,996,233
NET ASSETS						
END OF YEAR	\$ 11,105,449	\$ 601,163	\$ 11,706,612	\$ 5,986,990	\$ 1,608,139	\$ 7,595,129

The accompanying notes are an integral part of these financial statements.

Notes from Auditors

- \$4,903,717 Capital Campaign Revenues not reflected in graphs. All capital revenues are reflected in Plant, Property & Equipment on pg. 13 of Audit for House #4.
- Realized and Unrealized Losses (\$90,683) in Investment and Interest Income are not reflected in graph.
- \$270,206 in Depreciation Expenses incorporated in Expense Line items.

Our locations...



RMH - 227 Lewis Street
San Antonio, TX 78212
210-223-6014



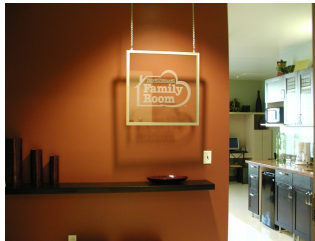
RMH - 4803 Sid Katz
San Antonio, TX 78229
210-614-2554



RMH - Children's Hospital of San Antonio
333 N. Santa Rosa Street
San Antonio, TX 78207



RMH Family Room
Laredo Medical Center
1700 E Saunders St.
Laredo, Texas 78044
210-614-2554



RMH Family Room
Doctors Hospital of Laredo
10700 McPherson Rd.
Laredo, Texas 78044
210-614-2554



RMH - 4847 Charles Katz
San Antonio, TX 78229
210-580-9000

Board of Directors

Carlos Rodriguez, President
Maria Victoria Acosta, VP Operations
Gena Marshall, VP Development
Clarissa Rodriguez, Secretary
Boriana Damm, Treasurer/VP Finance
Penny Viteo, Immediate Past President

Members at Large:

Luis Acosta
Darrin Baron
Amy Bastoni
Katie Brooks
Maureen Concklin
Linda Mance
James Maxey

Jane Fried, MD
Mark Gilger, MD
Antonio Hernandez, MD
Bradley Lacy
Joseph Pena
Cindy Snyder
Simon Thompson

Stephan Motz
Karen Shaffer
Barbara Neisendorf
Roxanne Olivarri
Russell Parker
Thomas Unruh
Johnise Stamper